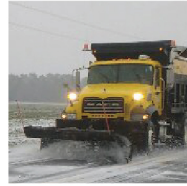
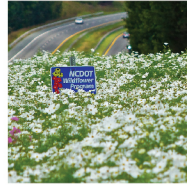


# NORTH CAROLINA

Department of Transportation

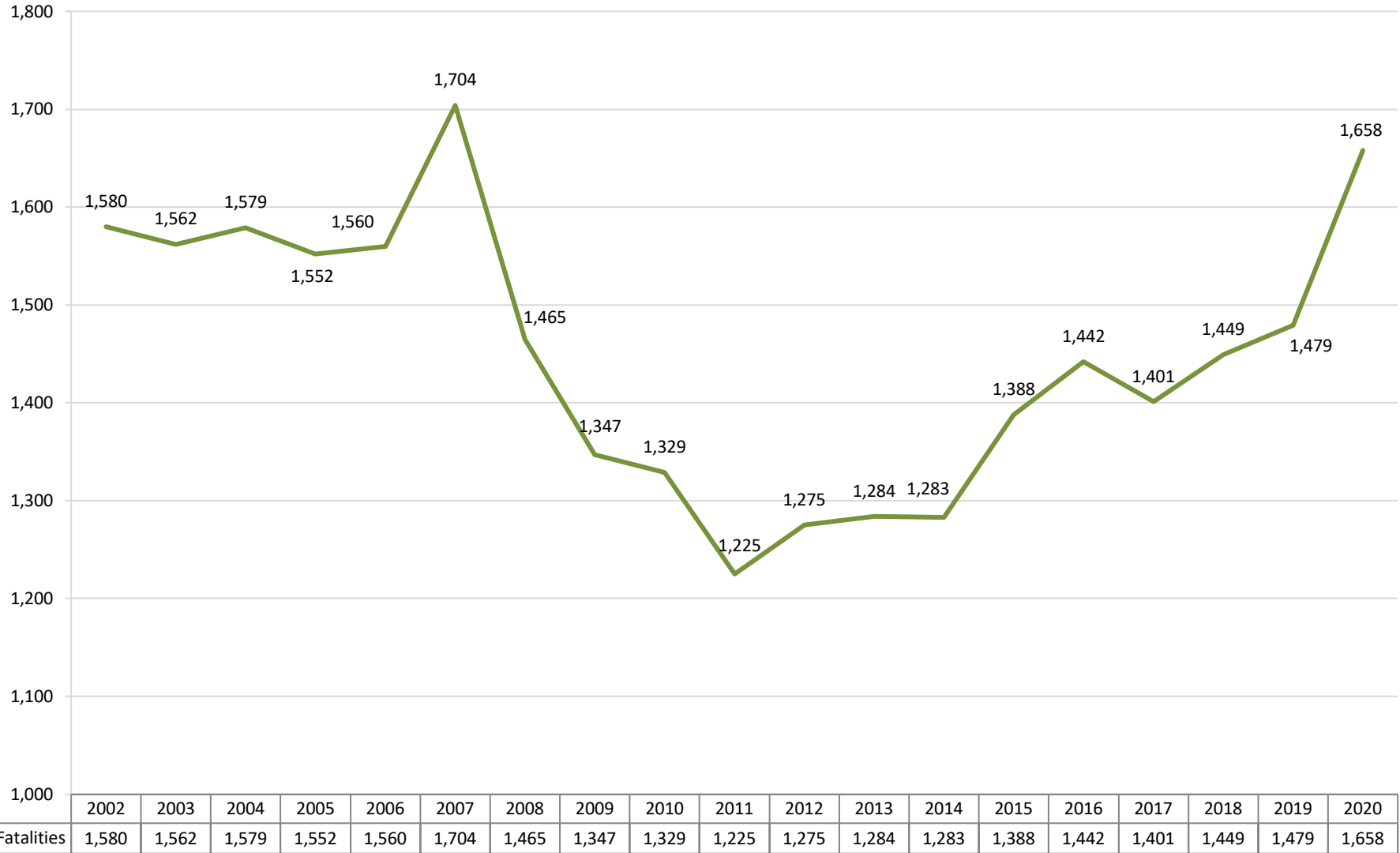


# Fatal and Serious Injury Trend Update

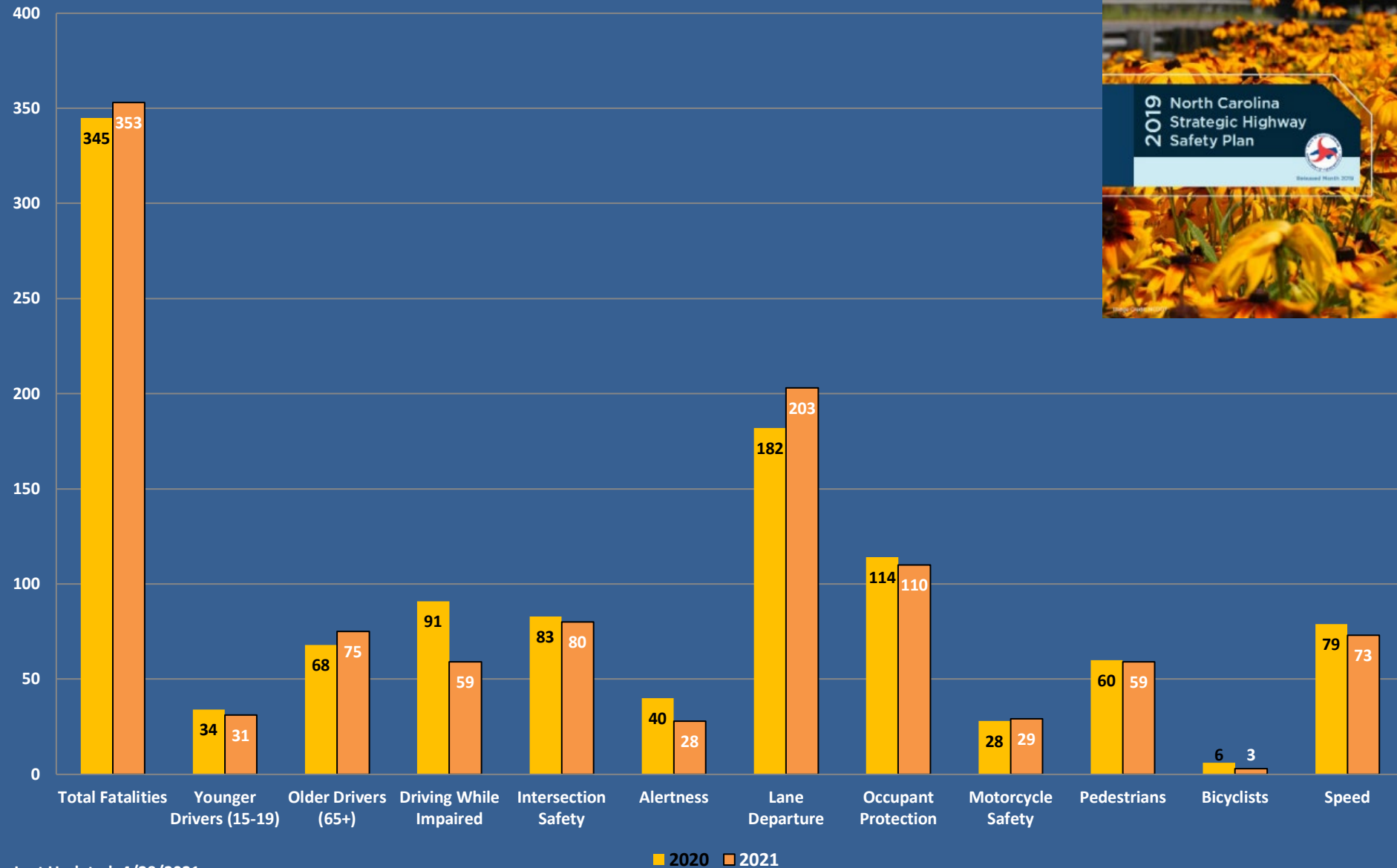
May 7, 2021

# Fatalities

## North Carolina Fatality Trends Since 2002

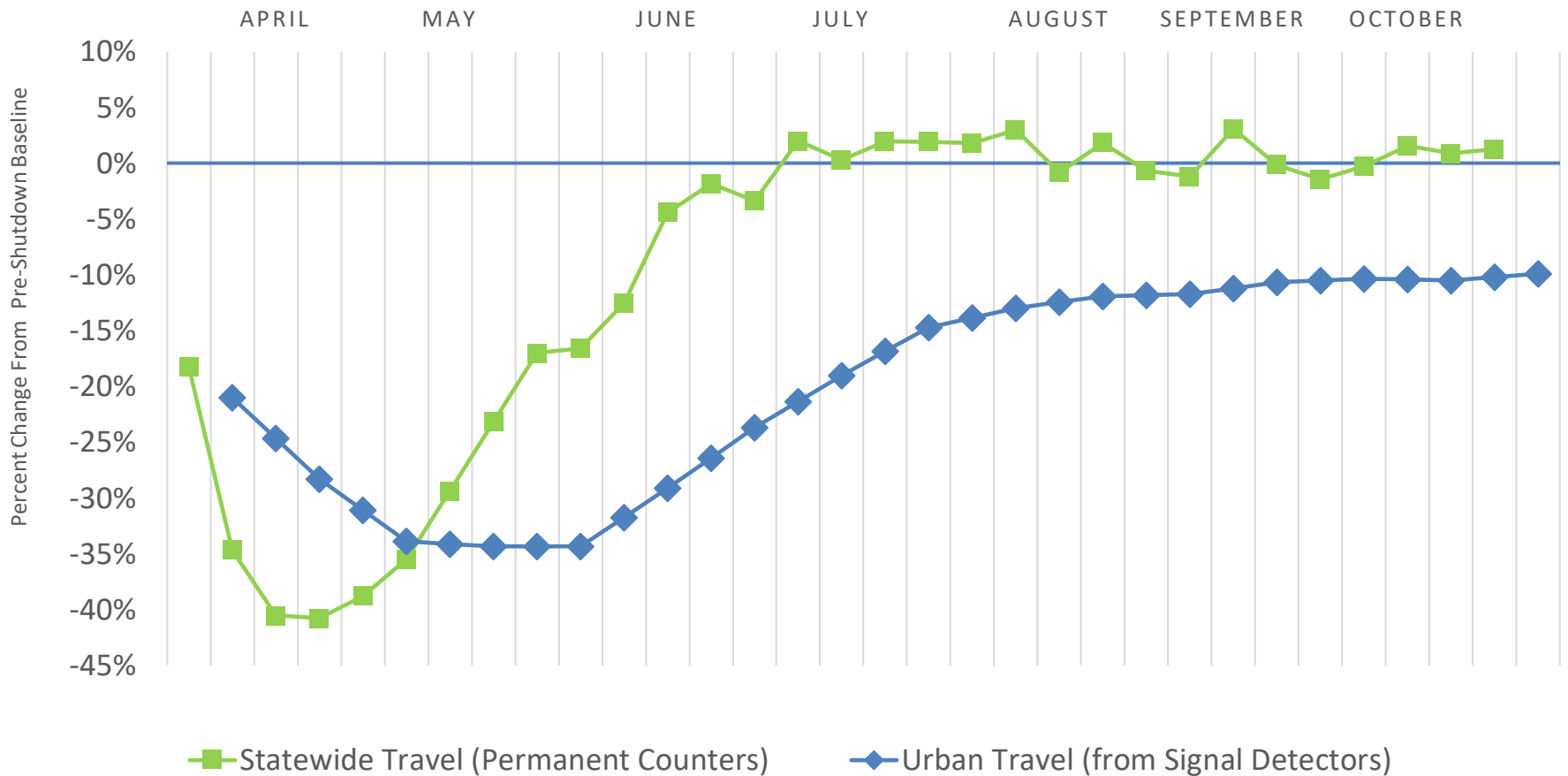


## Year to Date (January-March) Fatalities



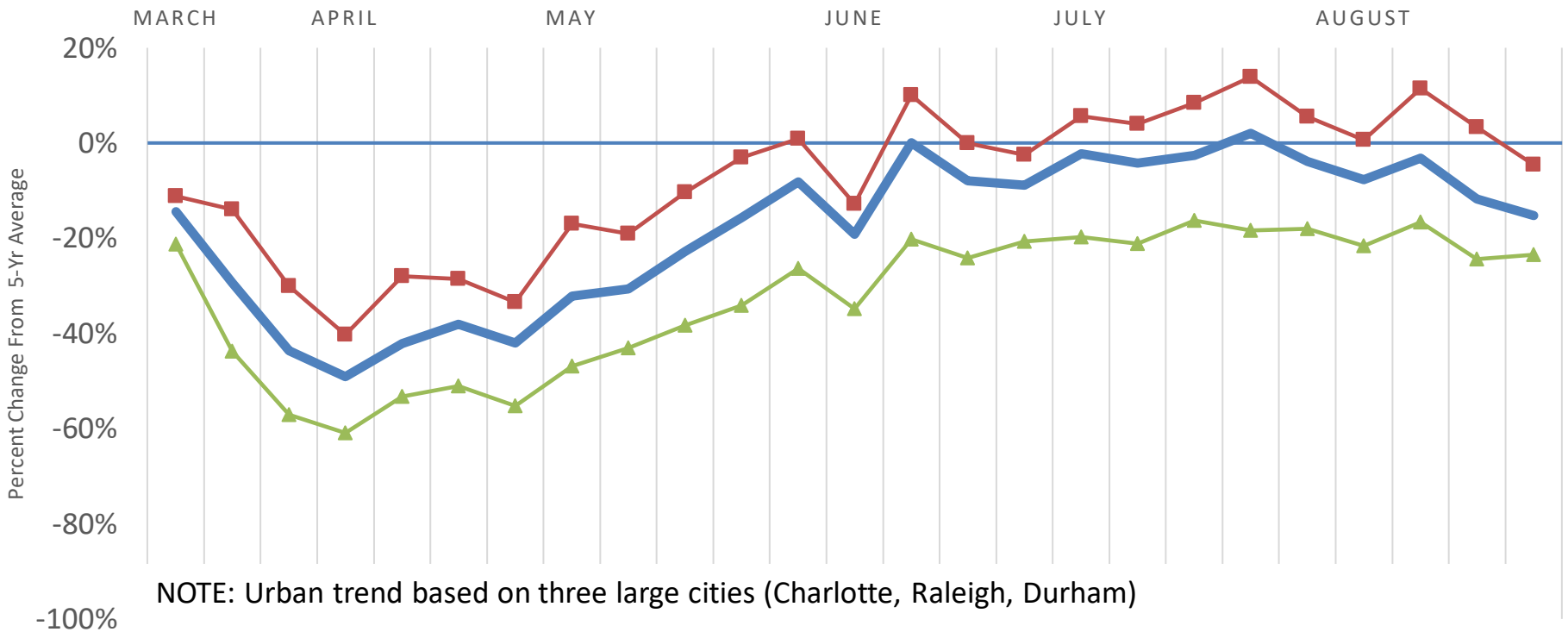
# Traffic Volume Trends

## Statewide Traffic Volumes



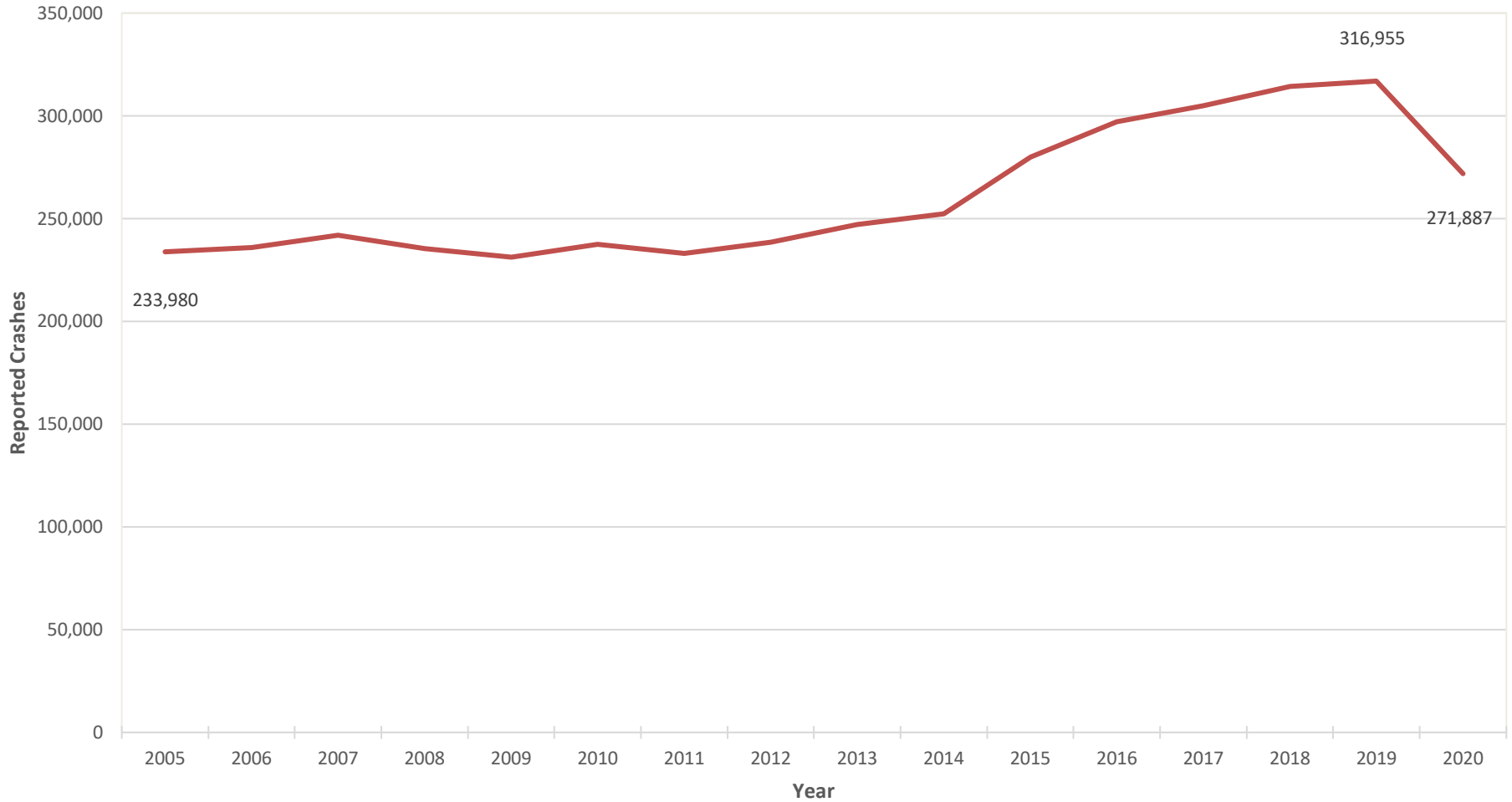
# Total Crash Trends

## Statewide Total Crashes



**Total Crashes down approximately 40%**

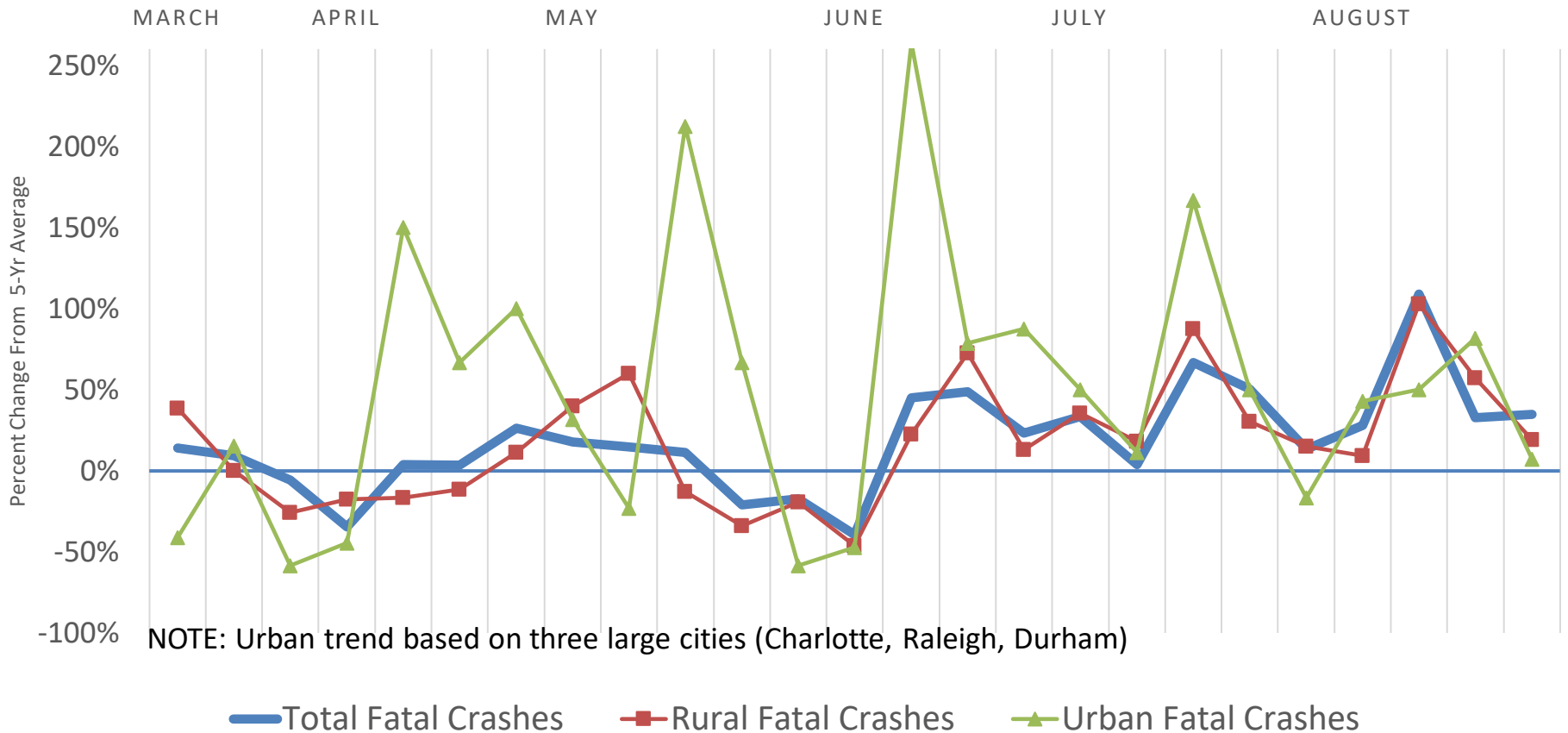
# Reported Crashes by Year (2005-2020)



**Total Crashes down approximately 14% (2019 to 2020)**

# Fatal Crash Trends

## Statewide Fatal Crashes

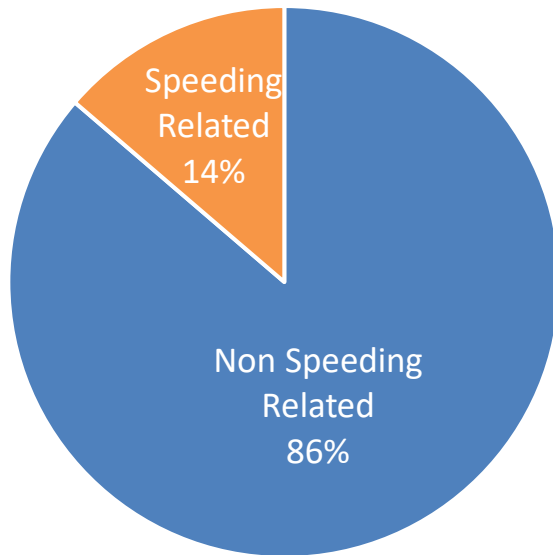


**Fatal Crashes up approximately 10%**

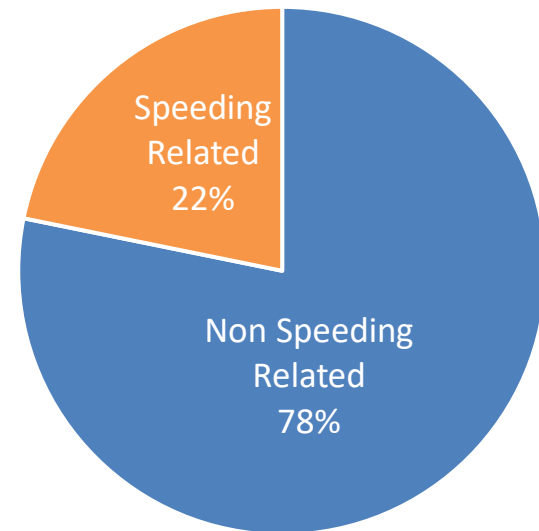
# Crash Trends - Speeding

## Fatal Crashes by Relation to Speeding (Exceeded Speed Limit)

Before Shutdown  
(Jan 1 - Mar 7)



After Shutdown  
(Mar 15 - Aug 29)



Some increase in proportion of speeding related crashes. Significant?

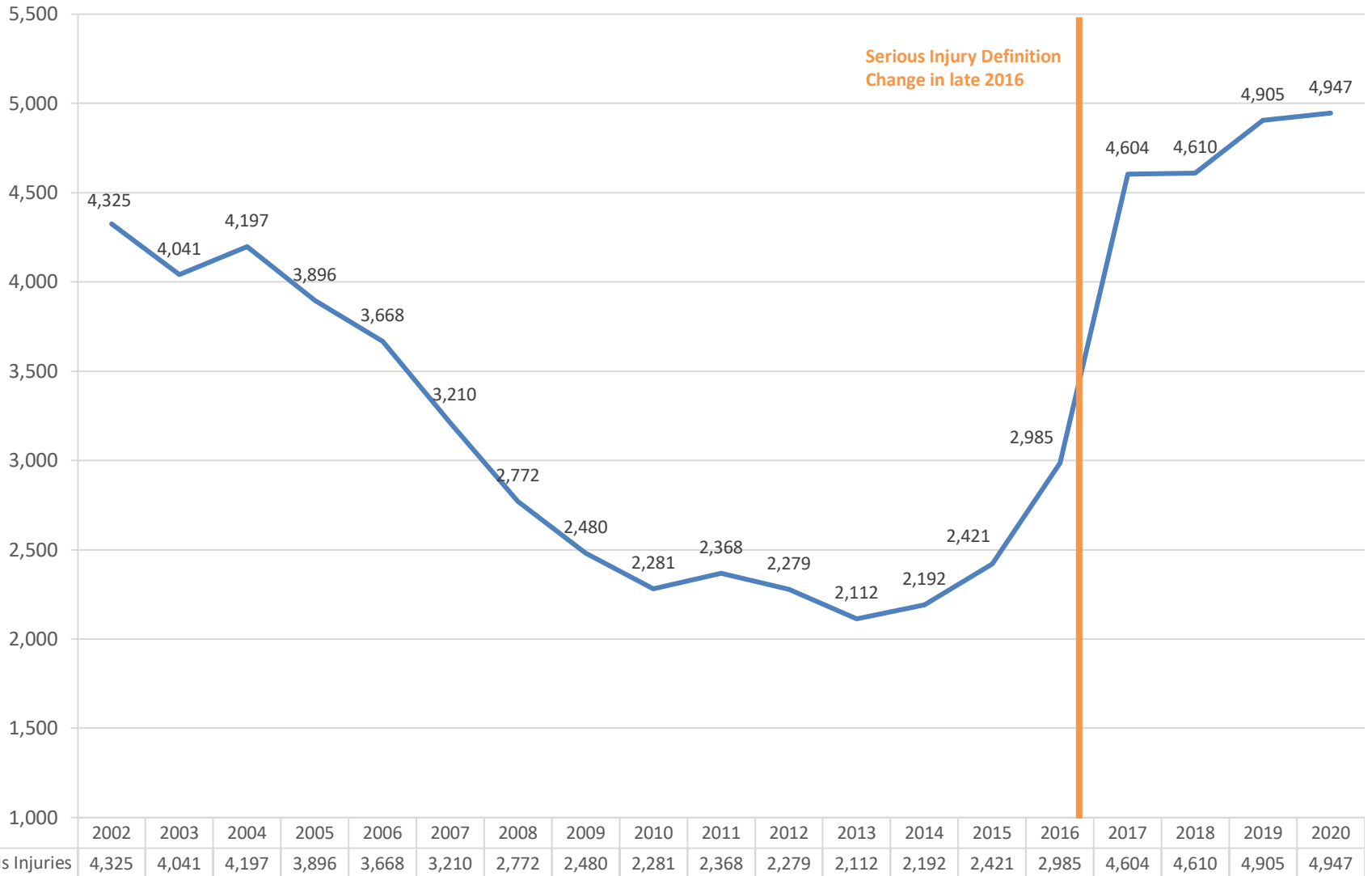


# COVID Safety Data Trends - Summary

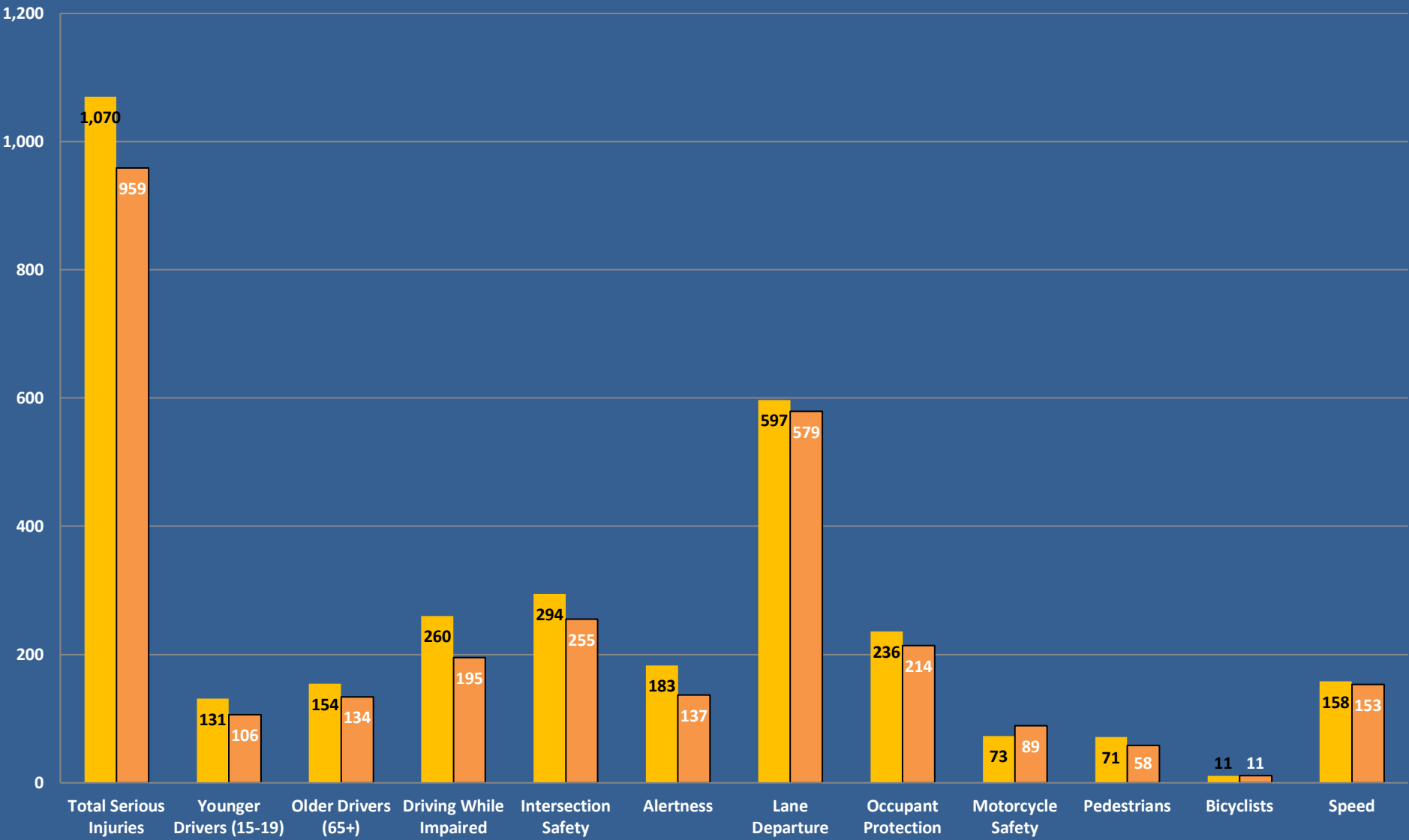
- Significant reductions in total crashes ( $\approx 40\%$ )
- Some increase in fatal crashes ( $\approx 10\%$ )
- **Much more analysis to come!!**

# Serious Injuries

## North Carolina Serious Injuries Trends Since 2002



## Year to Date (January-March) Serious Injuries



■ 2020 ■ 2021